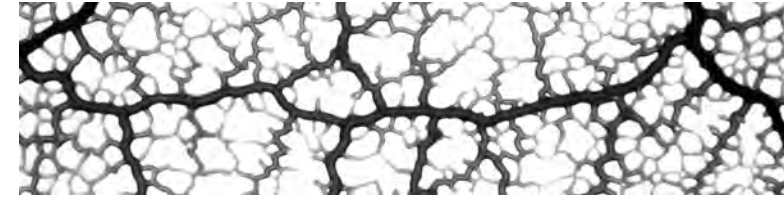
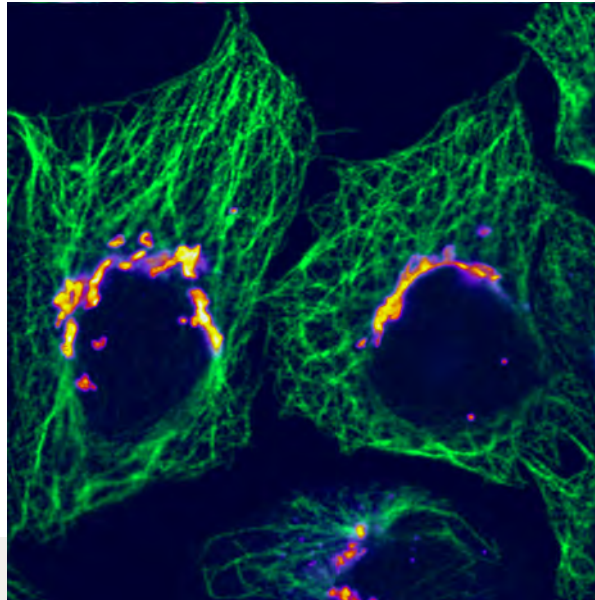
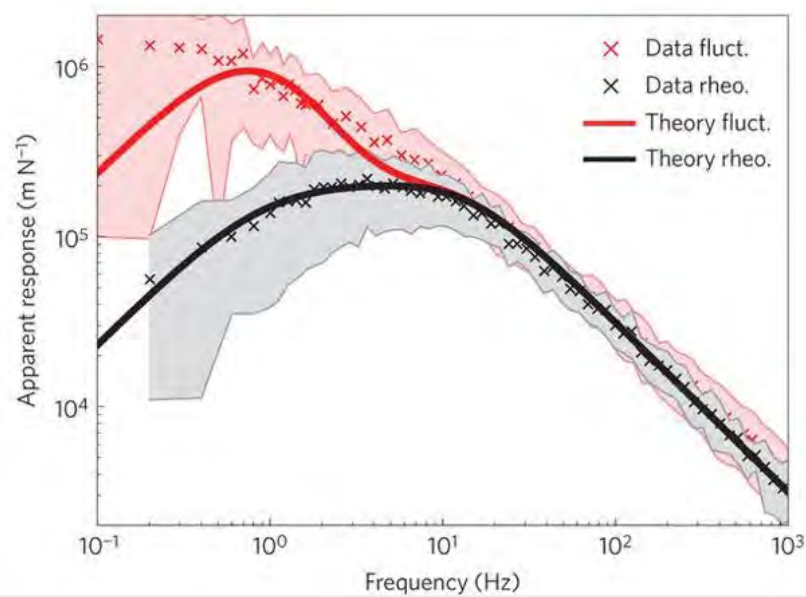
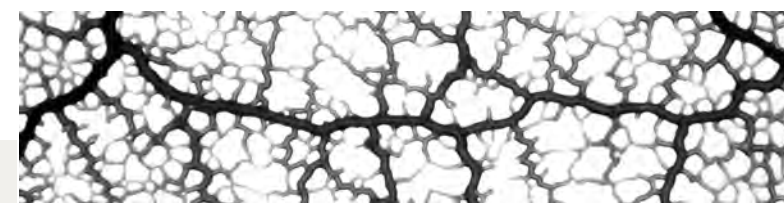


Symposium 2019

28. Juni 2019 (H13, NW I)



$$\frac{\partial \mathbf{u}}{\partial t} + (\mathbf{u} \cdot \nabla) \mathbf{u} - \nu \nabla^2 \mathbf{u} = -\nabla w + \mathbf{g}.$$



9:00 Timo Betz (Uni Münster)

Key note talk: Active cell mechanics: From fluctuations of red blood cells to cell migration in development and cancer

10:00 Philip Kollmannsberger (Uni Würzburg)

Computational Bioimage Analysis: Quantifying Interactions from Synapse to Network

11:30 Stefan Terjung (EMBL Heidelberg)

Interfacing Scientists, Microscopes and Companies: Working in a Scientific Core Facility

14:00 Karen Alim (MPI DS Göttingen)

Key note talk: Fluid flows shaping morphology

15:00 Benedikt Sabass (FZ Jülich)

A glimpse into the micromechanical world of bacteria

16:30 Ulrich Odefey (TH OWL)

From Academia and Biophysics to Industry and back

